

BASEMENT DEMO PLAN

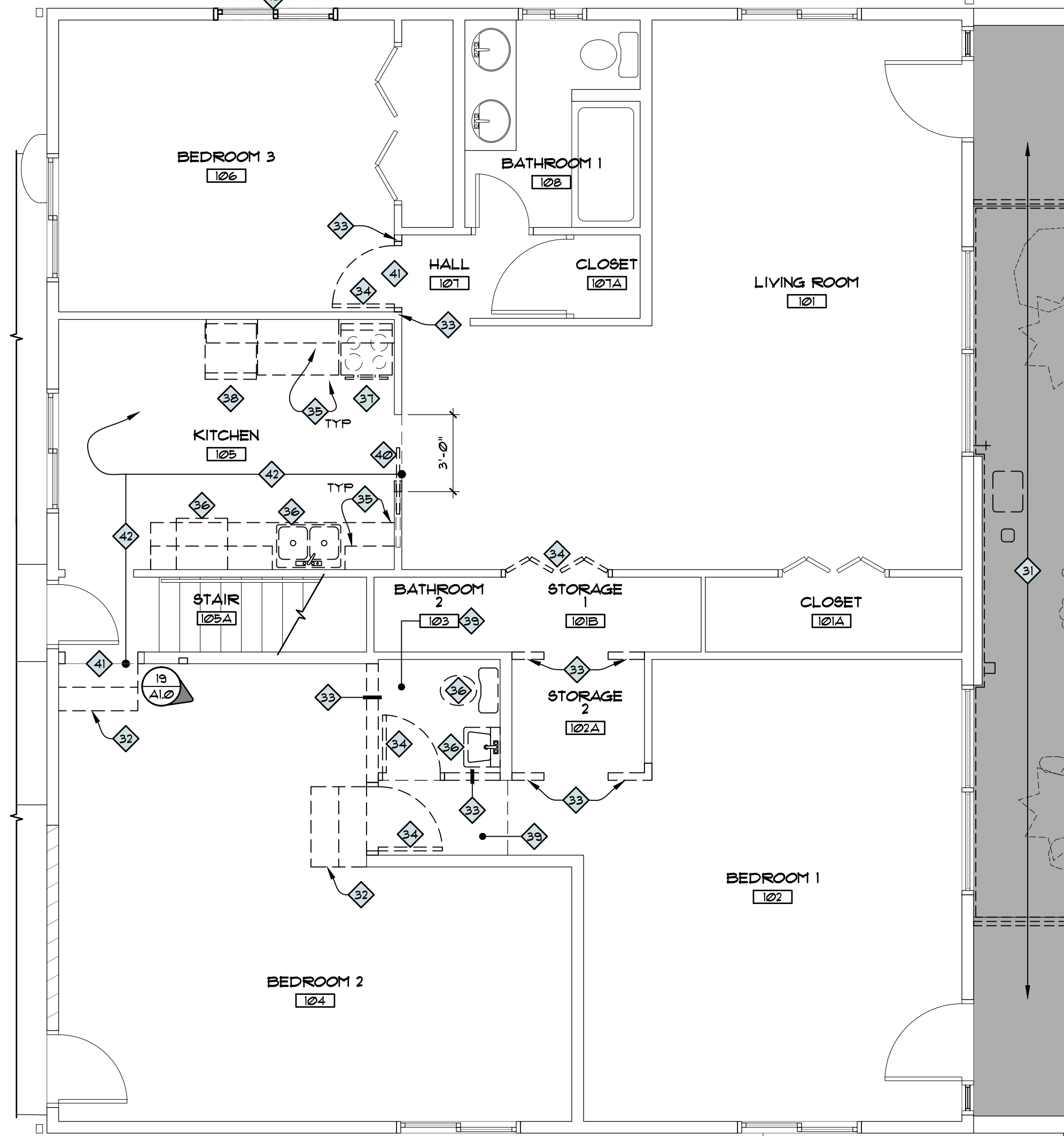
SCALE: 1/4" = 1'-0"

NORTH

BASEMENT DEMO PLAN KEY NOTES

- BASEMENT KEY NOTES (1-30)**
1. PREP EXPOSED FRAMED WALL FOR (N) GUB TYPE 'X' SHEATHING. (SEE PHOTO DETAIL(S) THIS SHEET)
 2. PREP EXPOSED FLOOR JOIST ASSEMBLY FOR (N) GUB TYPE 'X' CEILING. (SEE PHOTO DETAIL(S) THIS SHEET)
 3. NOT USED
 4. EXISTING HEADER/BEAM ABOVE (SHOWN DASHED)
 5. **ELEC-** (E) POWER PANEL(S) TO REMAIN, TAKE CARE PROTECT DURING ALL PHASES OF WORK.
 6. **ELEC-** (E) DATA BOX(S) TO REMAIN, TAKE CARE TO PROTECT DURING ALL PHASES OF WORK.

7. **PLUMB-** (E) HOT WATER TANK, TO REMAIN, TAKE CARE TO PROTECT DURING ALL PHASES OF WORK.
8. **MECH-** (E) HVAC UNIT(S), DUCTING, COVER RETURN AND SUPPLY DIFFUSERS TO REMAIN, TAKE CARE TO PROTECT DURING ALL PHASES OF WORK.
9. (E) CASEWORK/SHELVING TO REMAIN, MODIFY AS REQUIRED TO RECEIVE (N) GUB SHEATHING.



MAIN FLOOR DEMO PLAN

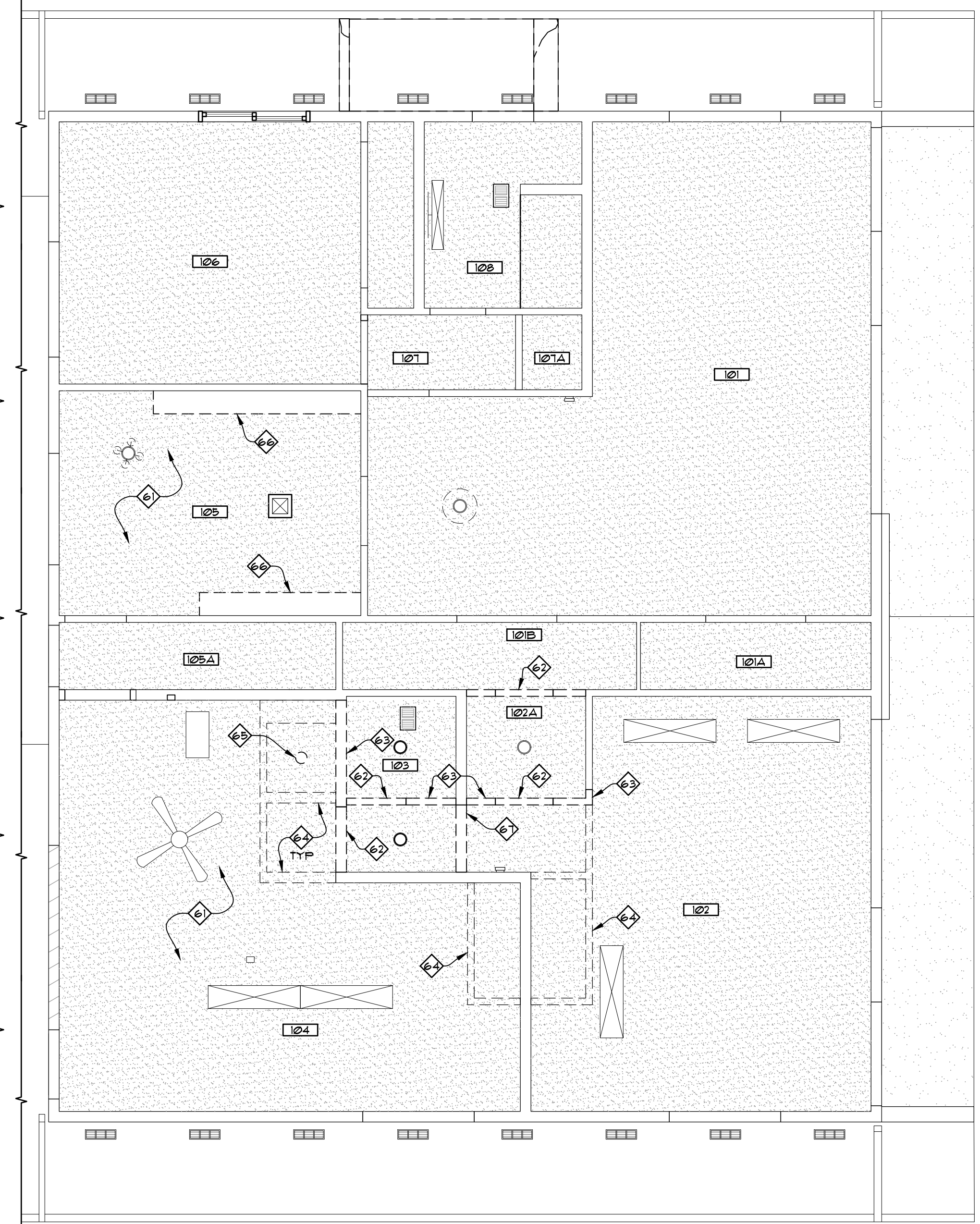
SCALE: 1/4" = 1'-0"

NORTH

MAIN FLR DEMO PLAN KEY NOTES

- MAIN FLOOR KEY NOTES 31-62**
31. EXTERIOR IMPROVEMENTS, SEE G10 FOR EXTENTS. (SHADED FOR CLARITY)
 32. DEMO (E) STAIRS AND PREP AREA FOR (N) WORK.
 33. DEMO (E) WALL IN ITS ENTIRETY.
 34. DEMO DOOR AND PREP AREA FOR (N) WORK.
 35. DEMO (E) CASEWORK IN ITS ENTIRETY, PREP AREA FOR NEW WORK.
 36. **PLUMB-** DEMO (E) PLUMBING FIXTURE(S), IE SINK, DISHWASHER, TOILET, ETC. PREP FOR (N) WORK. COORDINATE WITH PLUMBER FOR EXTENTS.
 37. **ELEC-** DEMO (E) ELECTRICAL RANGE, PREP AREA FOR (N) WORK.
 38. (E) REFRIGERATOR, SALVAGE AND RETURN TO OWNER.

39. DEMO (E) FLOORING, PREP AREA FOR (N) FLOORING.
40. DEMO (E) POCKET DOOR, AND DEMO PORTION OF WALL FOR NEW 3'-0" OPENING. PREP AREA FOR (N) FLOORING.
41. DEMO AND PREP OPENING FOR LARGER DOOR SIZE.
42. DEMO EXISTING TILE FLOORING AND TILE BASE IN KITCHEN AND TOP OF STAIR LANDING AND PREP FOR NEW SHEET VINYL.
43. DEMO EXISTING WINDOW AND PREP FOR NEW WINDOW AT LOWERED SILL HEIGHT (CURRENTLY AT 46" AFF BUT NEEDS TO 44" AFF).



MAIN FLOOR CEILING DEMO PLAN

SCALE: 1/4" = 1'-0"

NORTH

MAIN FLR CLG DEMO KEY NOTES

- MAIN FLOOR CEILING KEY NOTES 61-92**
61. (E) CEILING TO REMAIN, PREP FOR (N) PAINT.
 62. DEMO (E) DOOR HEADER, PREP FOR (N) BATHROOM CEILING.
 63. PORTION OF (E) WALL TO BE DEMO'D (SHOWN HEAVY DASH)
 64. APPROXIMATE LOCATION OF (N) BATHROOM WALL ASSEMBLY.
 65. PREP AREA FOR (N) SHOULDER LIGHT.
 66. DEMO (E) KITCHEN BULKHEAD, PREP AREA FOR (N) CEILING
 67. APPROXIMATE LOCATION OF (N) BATHROOM DOOR/WALL ASSEMBLY

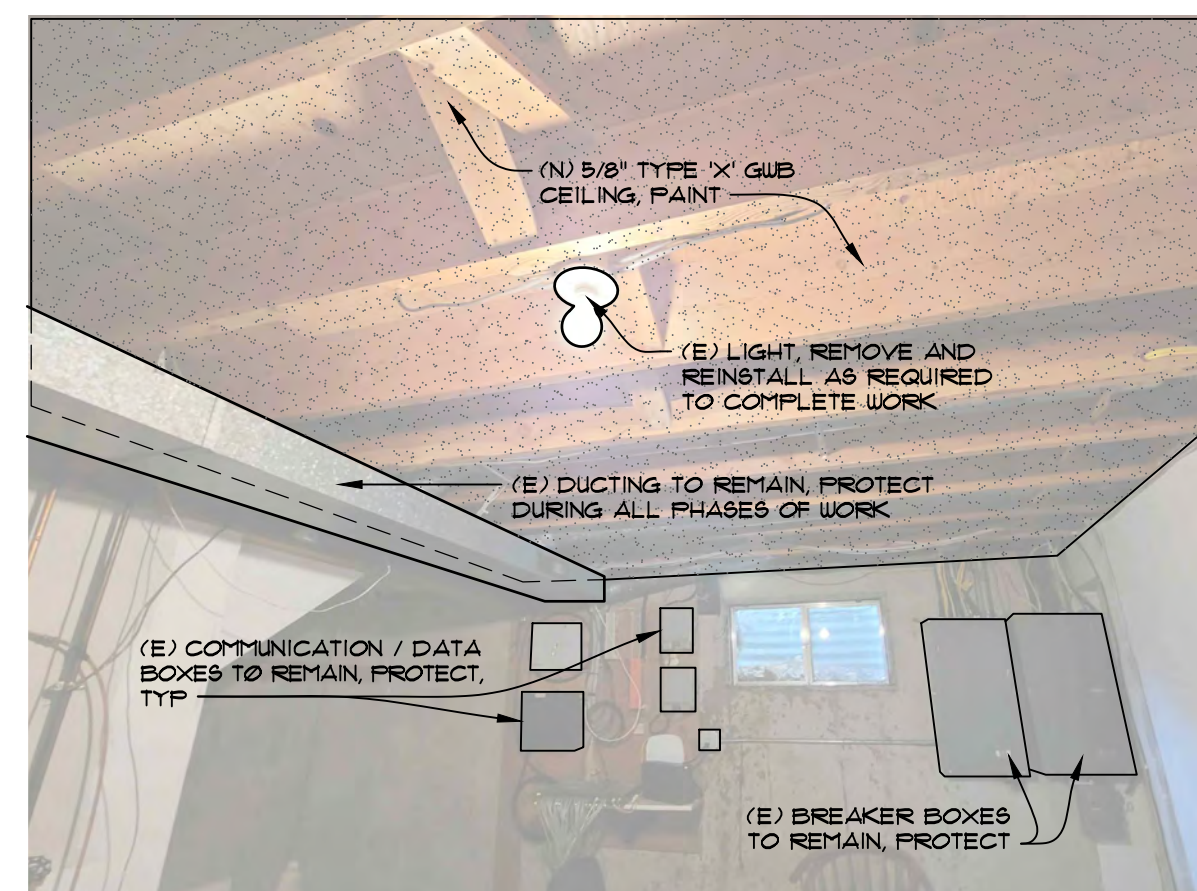


PHOTO DETAIL: ELECTRICAL ROOM - B02

17

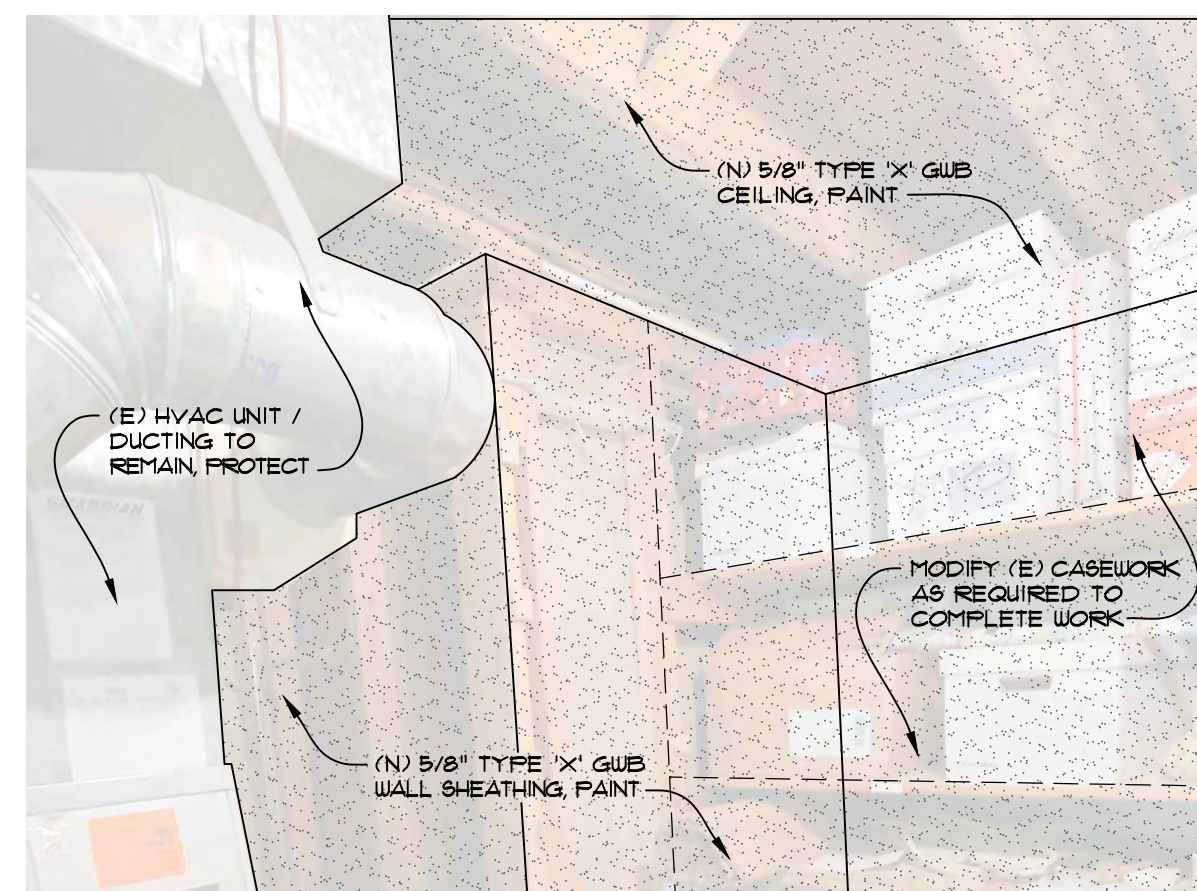


PHOTO DETAIL: MECHANICAL ROOM - B05

18

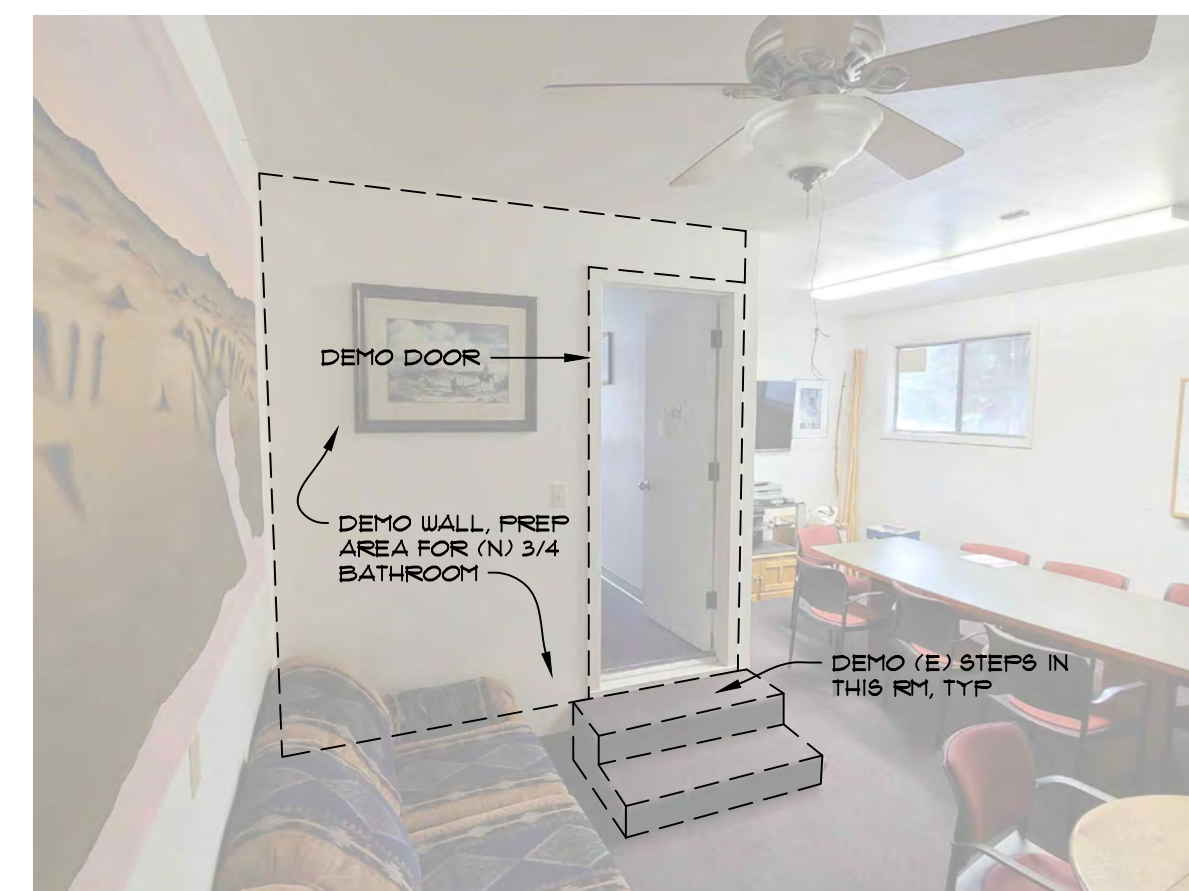


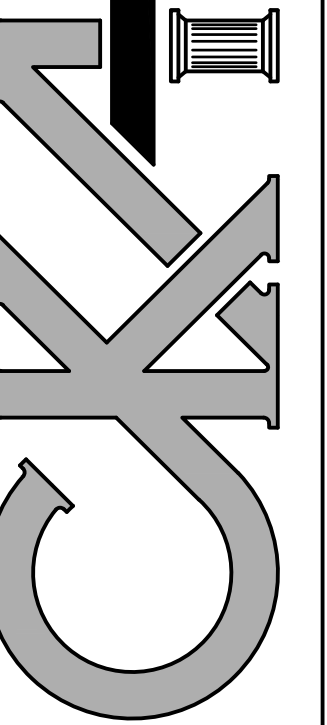
PHOTO DETAIL: BEDROOM 2 - 104

19



CONSULTANTS
 DATE 12/06/2024
 DRAWN BY DJC, CFF
 CHECKED BY BLL
 CEA PROJ. NO. 23043
 LCSC PROJ. NO. 240005

CASTELLAW ♦ KOM ♦ ARCHITECTS
 1126 MAIN STREET ♦ LEWISTON, IDAHO
 OFFICE (208) 746-0183

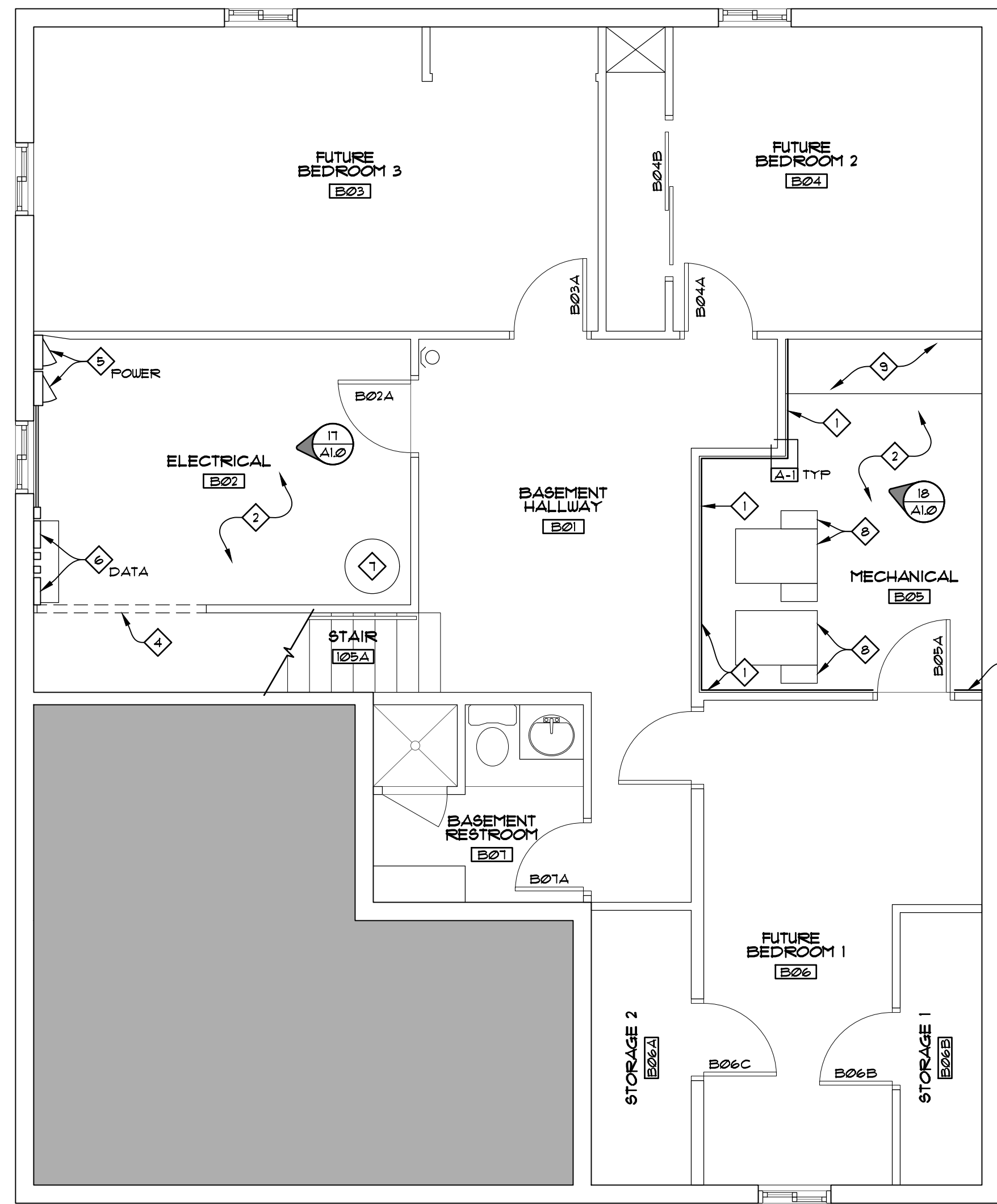


PROJECT
 LC STATE
 LCSC NO. 240005
 P/AMKINWAAS PHASE 1
 RENOVATION
 112 & 114 7TH ST. LEWISTON, ID 83501

DRAWING
 PHASE 1
 BASEMENT DEMO PLAN,
 MAIN FLOOR DEMO PLAN,
 MAIN FLOOR CEILING DEMO PLAN

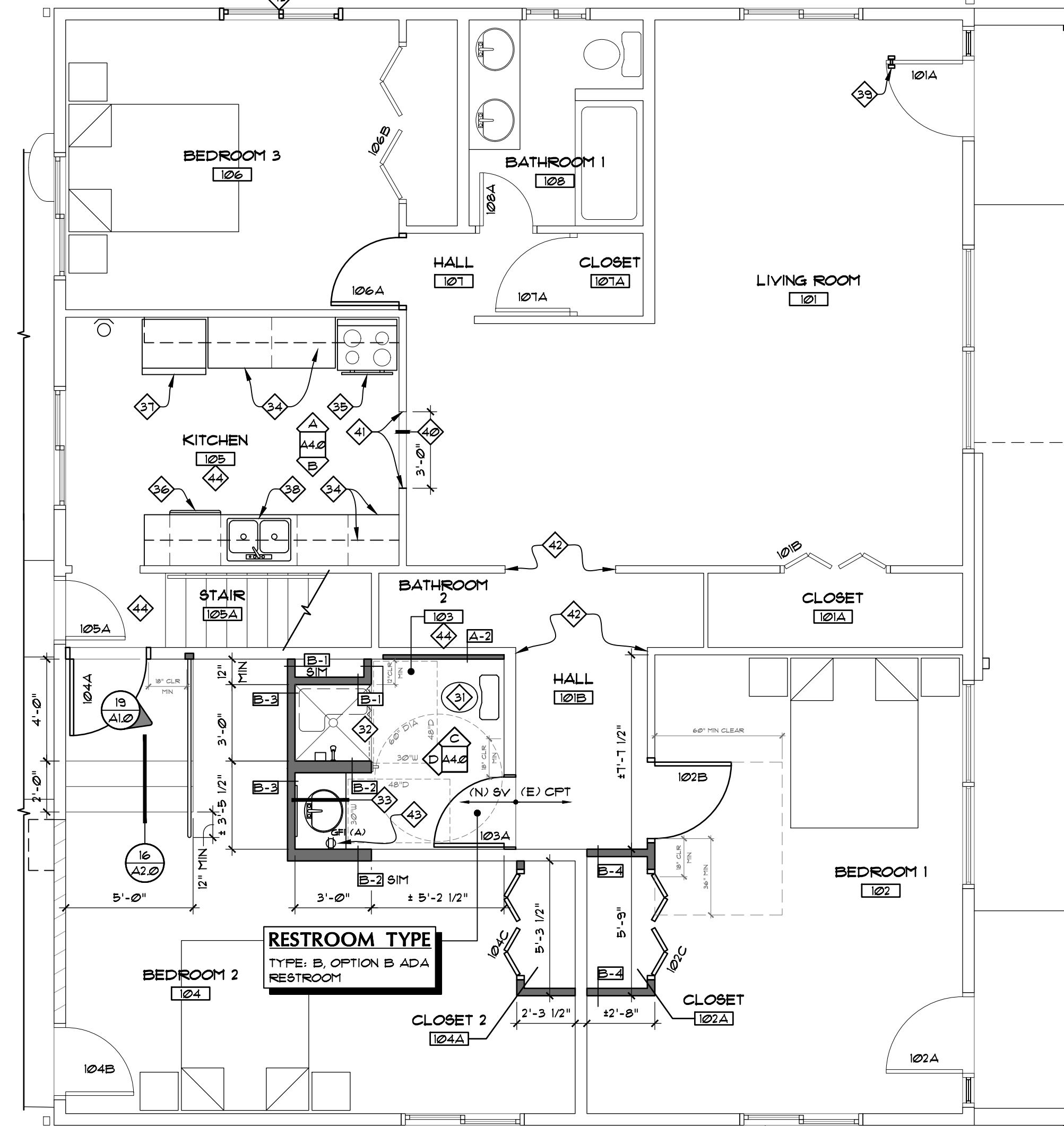
SHEET
 A1.0

CONSTRUCTION DOCUMENTS



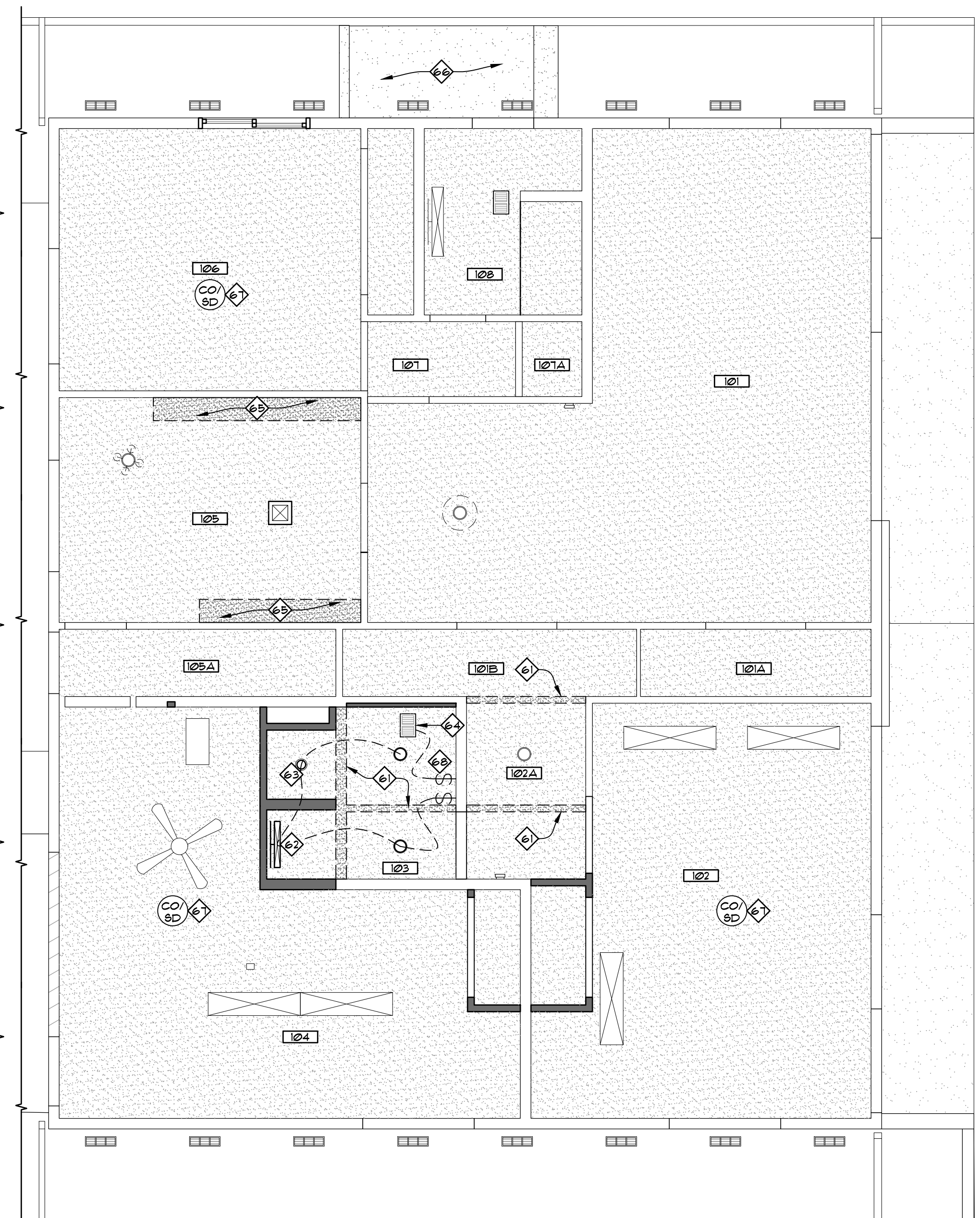
BASEMENT FLOOR PLAN

SCALE: 1/4" = 1'-0"



MAIN FLOOR PLAN

SCALE: 1/4" = 1'-0"



MAIN FLOOR CEILING PLAN

SCALE: 1/4" = 1'-0"



BASEMENT FLOOR PLAN KEY NOTES

BASEMENT KEY NOTES (1-30)

- (N) 5/8" GUB TYPE 'X' WALL SHEATHING, PAINT.
- (N) 5/8" GUB TYPE 'X' CEILING SHEATHING, PAINT.
- NOT USED
- EXISTING HEADER/BEAM ABOVE (SHOWN DASHED)
- ELEC.** (E) POWER PANEL(S), TO REMAIN, TAKE CARE TO PROTECT DURING ALL PHASES OF WORK.
- ELEC.** (E) DATA BOX(S), TO REMAIN, TAKE CARE TO PROTECT DURING ALL PHASES OF WORK.
- PLUMB.** (E) HOT WATER TANK, TO REMAIN, TAKE CARE TO PROTECT DURING ALL PHASES OF WORK.
- MECH.** (E) HVAC UNIT(S) AND DUCTING TO REMAIN, TAKE CARE TO COVER SUPPLY AND RETURN DIFFUSER TO PROTECT DURING ALL PHASES OF WORK.
- (E) CASEWORK/SHELVING TO REMAIN, MODIFY AS REQUIRED TO RECEIVE NEW GUB SHEATHING.

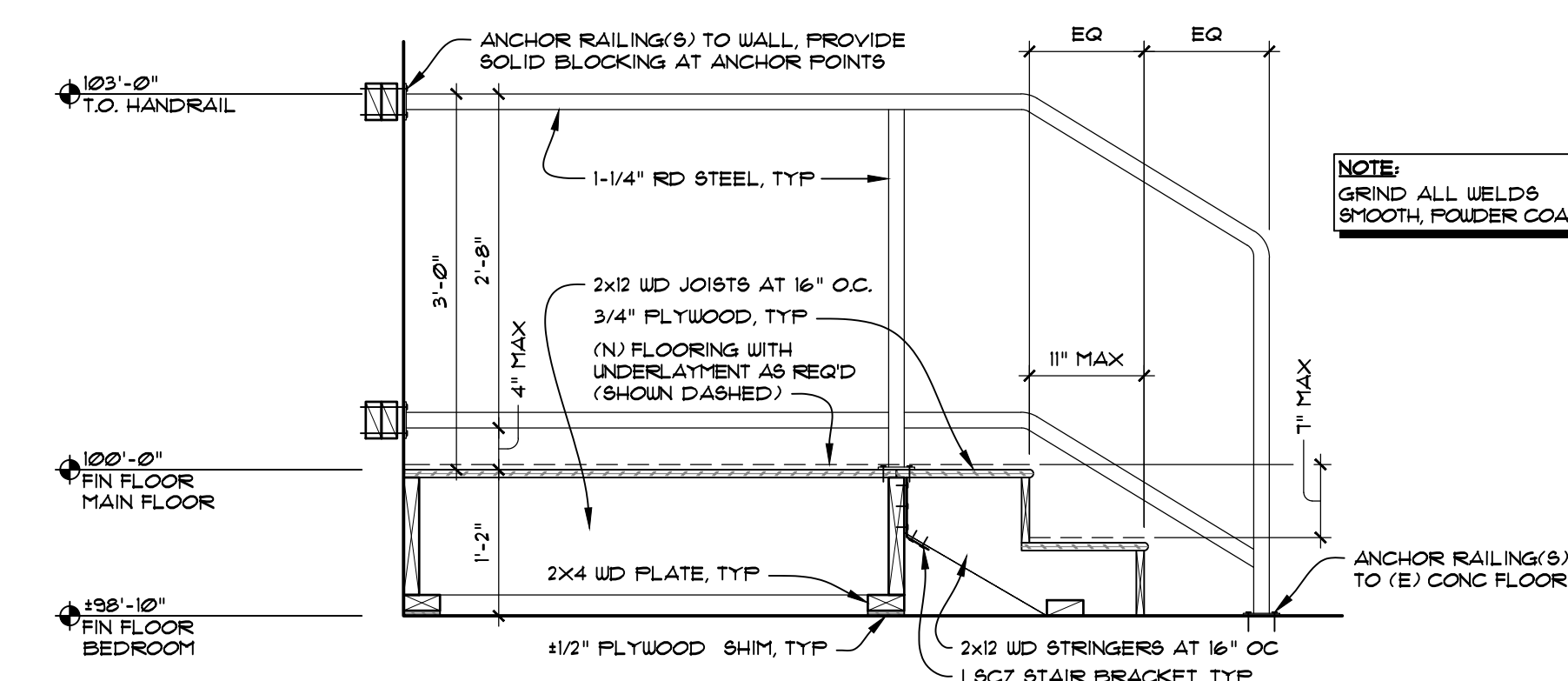
MAIN FLOOR PLAN KEY NOTES

MAIN FLOOR CEILING KEY NOTES (31-60)

- PLUMB.** (N) BATHROOM TOILET, VERIFY THAT IT MEETS ALL ADA REQUIREMENTS FOR TYPE 'B' BATHROOM.
- PLUMB.** (N) BATHROOM SHOWER, 36"x36" MIN.
- PLUMB.** (N) SINK / VANITY ASSEMBLY, SEE INTERIOR ELEVATION(S)
- (N) KITCHEN CASEWORK
- ELEC.** (N) KITCHEN RANGE
- PLUMB.** (N) DISHWASHER
- (N) REFRIGERATOR
- PLUMB.** (N) 2-COMPARTMENT KITCHEN SINK FAUCET, SPRAYER, STRAINER, AND ALL CONNECTIONS EXTENDED FROM ORIGINAL SINK LOCATION.
- MODIFY (E) DOOR HANDLE HARDWARE FOR (N) DOOR HANDLE HARDWARE.
- (N) WIDE RUBBER THRESHOLD TO COVER FULL WIDTH OF SPAN FLOOR AT WALL REMOVAL.
- PROVIDE NEW WD STUDS AT WIDENED OPENING, PATCH DRYWALL, PROVIDE CORNER GUARD(S).
- PATCH WALL WHERE DOORS/WALLS REMOVED, TYP.
- ELEC.** (N) GFCI OUTLET ABOVE COUNTER.
- NEW SHEET VINYL FLOORING OVER NEW UNDERLAMENT, PER MFR'S REQ'S. PROVIDE NEW RUBBER BASE AT WALLS AND CASEWORK.
- NEW WINDOW AND INTERIOR AND EXTERIOR TRIMS (THIS WINDOW SILL ELEVATION BEING LOWERED FROM 46" AFF TO 44" AFF)

MAIN FLOOR CEILING KEY NOTES (61-90)

- PATCH CEILING AT DEMO'D WALL(S), 5/8" TYPE 'X' GUB CEILING, PAINT.
- ELEC.** (N) WALL MOUNTED VANITY LIGHT.
- ELEC.** (N) SHOWER LIGHT.
- MECH/ELEC.** REPLACE EXISTING EXHAUST FAN WITH NEW.
- PATCH CEILING AT DEMO'D KITCHEN BULK-HEAD, 5/8" TYPE 'X' GUB CEILING, PAINT.
- PATCH SOFFIT, PRIME AND PAINT TO MATCH EXISTING SOFFIT COLOR.
- ELEC.** (N) CARBON MONOXIDE / SMOKE DETECTOR.
- ELEC.** RE-CIRCUIT EXISTING LIGHTS AND CONNECT NEW SWITCH TO EXISTING LIGHTS AND NEW LIGHTS.



16 BEDROOM PLATFORM ASSEMBLY

SCALE: 3/4" = 1'-0"

WALL TYPES

A-1 FURRED WALL ASSEMBLY SCALE: 1/2" = 1'-0"

A-2 FURRED WALL ASSEMBLY SCALE: 1/2" = 1'-0"

B-1 WALL ASSEMBLY SCALE: 1 1/2" = 1'-0"

B-2 WALL ASSEMBLY SCALE: 1 1/2" = 1'-0"

B-3 WALL ASSEMBLY SCALE: 1/2" = 1'-0"

B-4 WALL ASSEMBLY SCALE: 1/2" = 1'-0"

LICENSED ARCHITECT AS-LS-03 STATE OF IDAHO

CASTELLAW ♦ KOM ♦ ARCHITECTS

1126 MAIN STREET ♦ LEWISTON, IDAHO

OFFICE (208) 746-0183

PROJECT ♦ LCSC NO. 240005

LC STATE

PI/AMKINWAAS PHASE 1

RENOVATION

112 & 114 7TH ST. LEWISTON, ID 83501

CONSTRUCTION DOCUMENTS

DRAWING ♦

PHASE 1

BASEMENT FLOOR PLAN,

MAIN FLOOR PLAN,

MAIN FLOOR CEILING PLAN

SHEET ♦

A2.0

DATE ♦ 12/06/2024

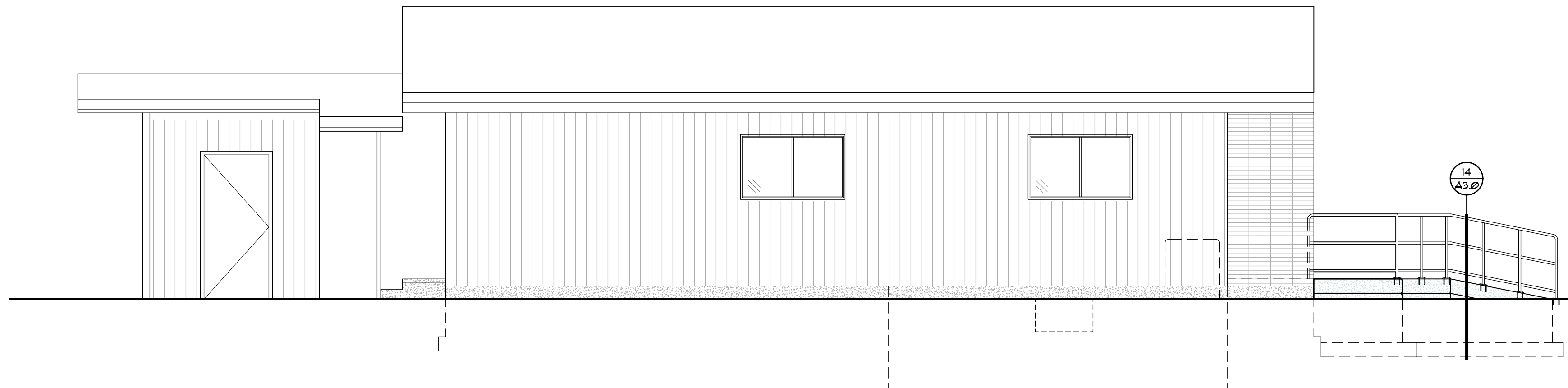
DRAWN ♦ DIC, CF

CHECKED ♦ BLL

CICA PROJ. NO. ♦ 23043

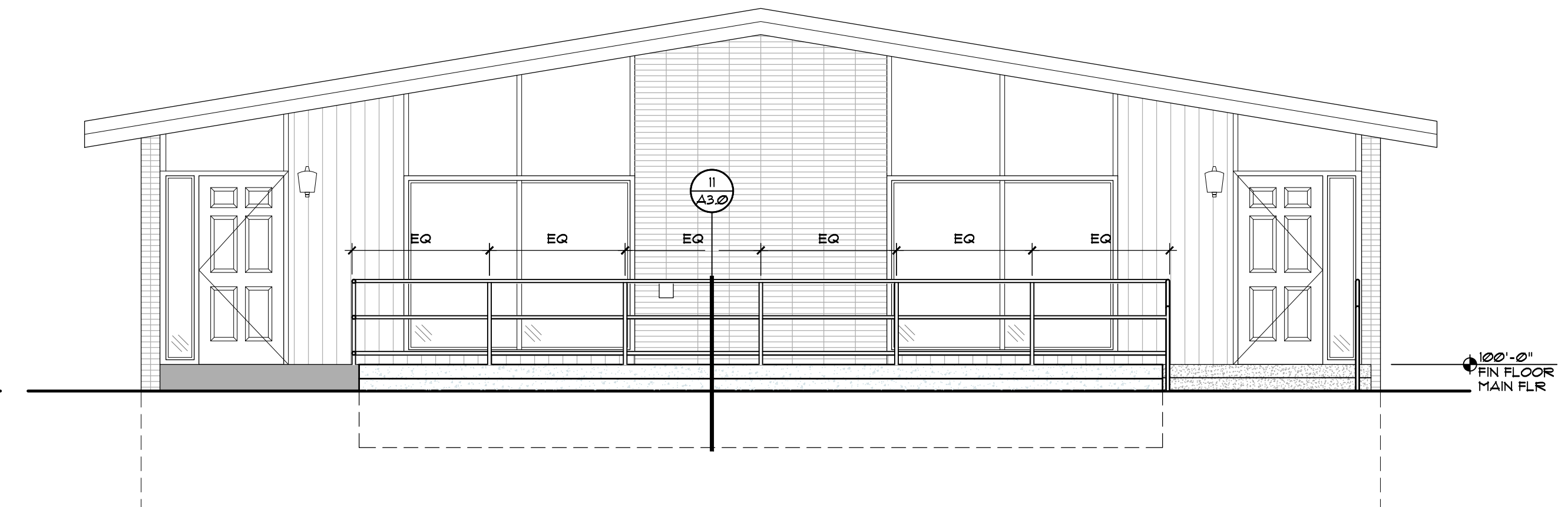
LCSC PROJ. NO. ♦ 240005

REVISIONS



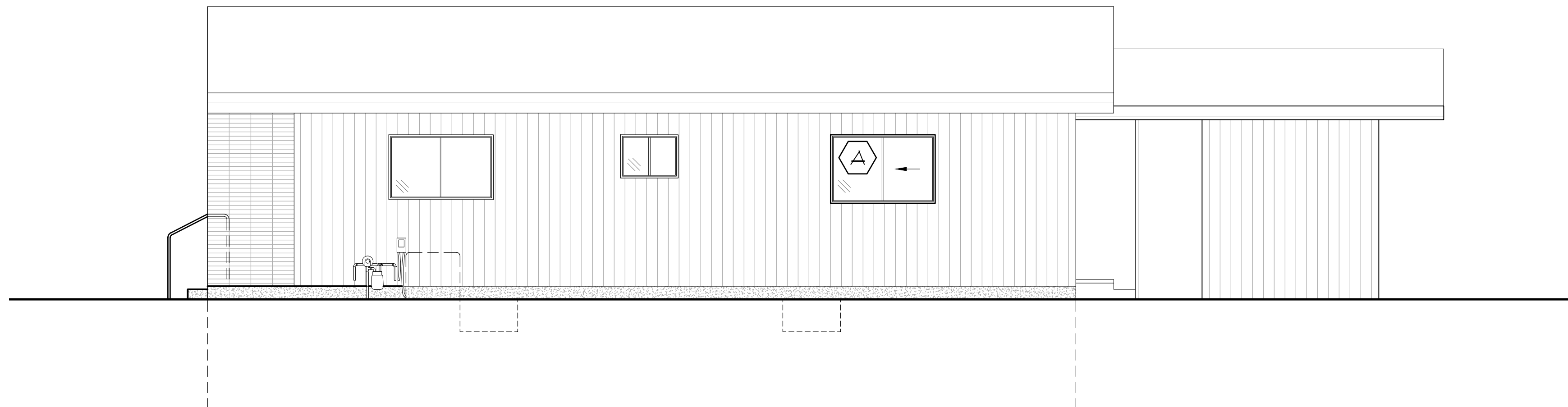
SOUTH ELEVATION

SCALE: 1/8" = 1'-0"



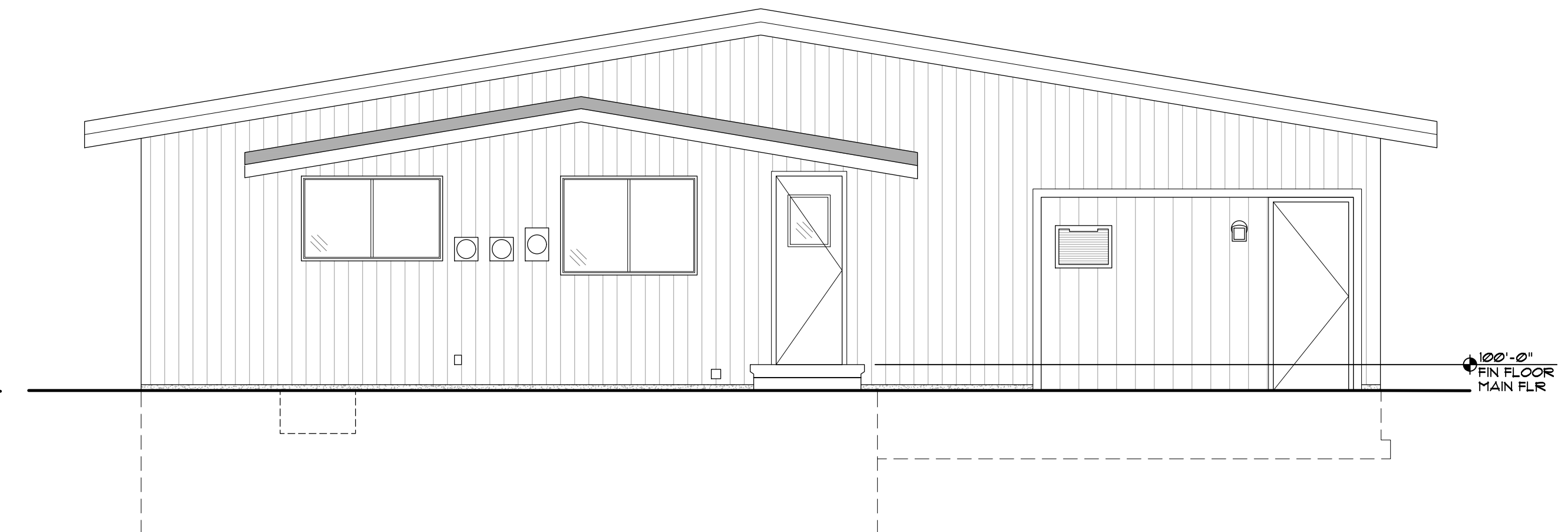
EAST ELEVATION

SCALE: 1/4" = 1'-0"



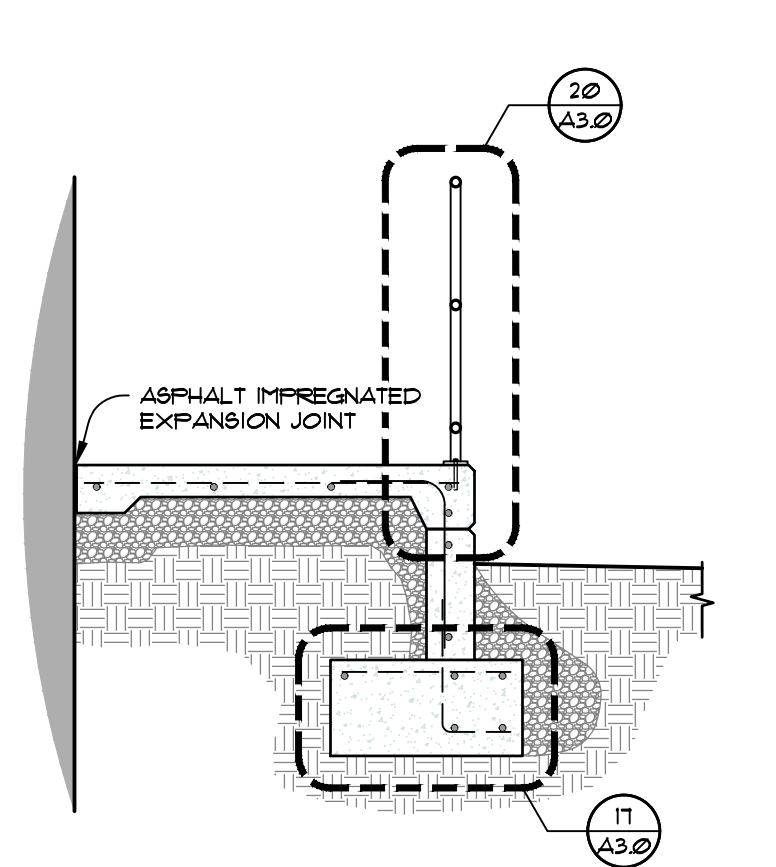
NORTH ELEVATION

SCALE: 1/8" = 1'-0"

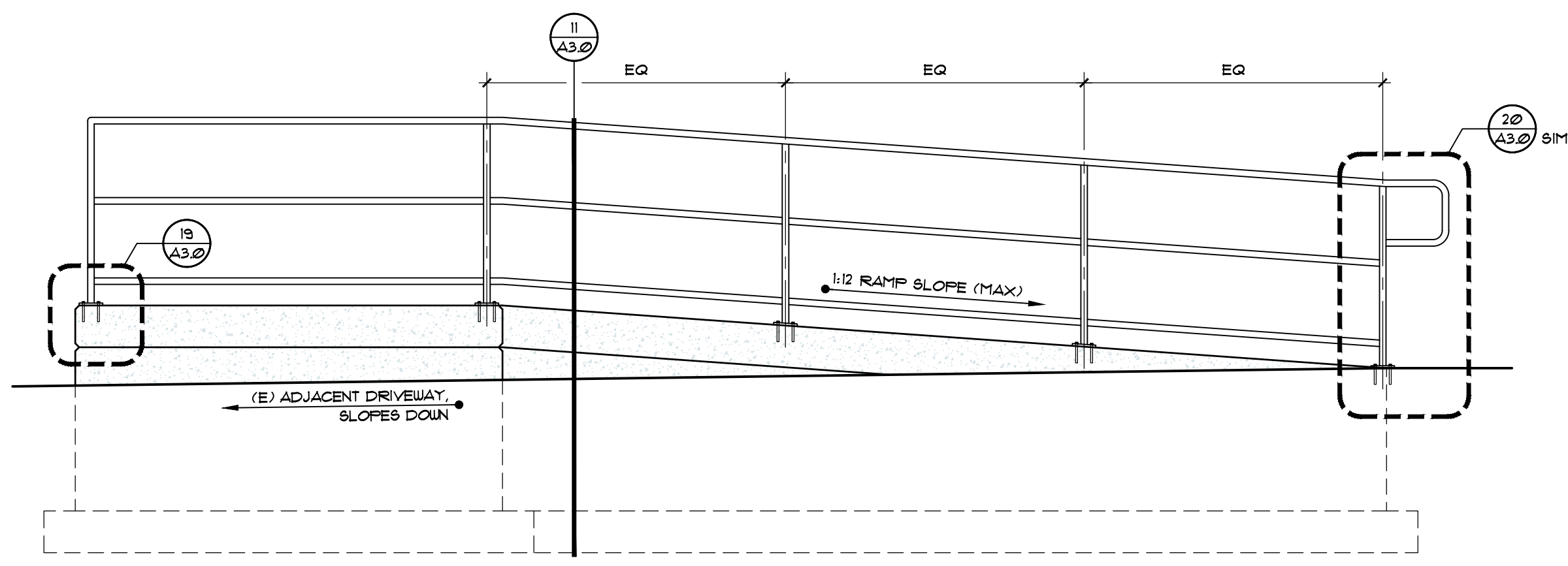


WEST ELEVATION

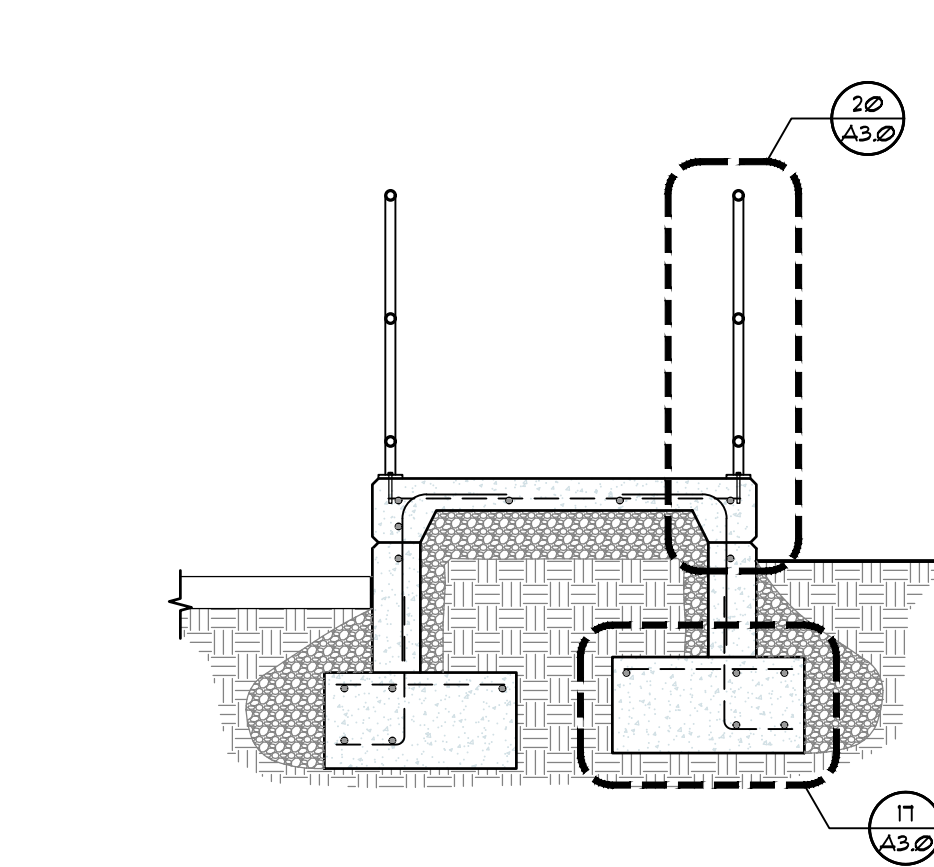
SCALE: 1/8" = 1'-0"



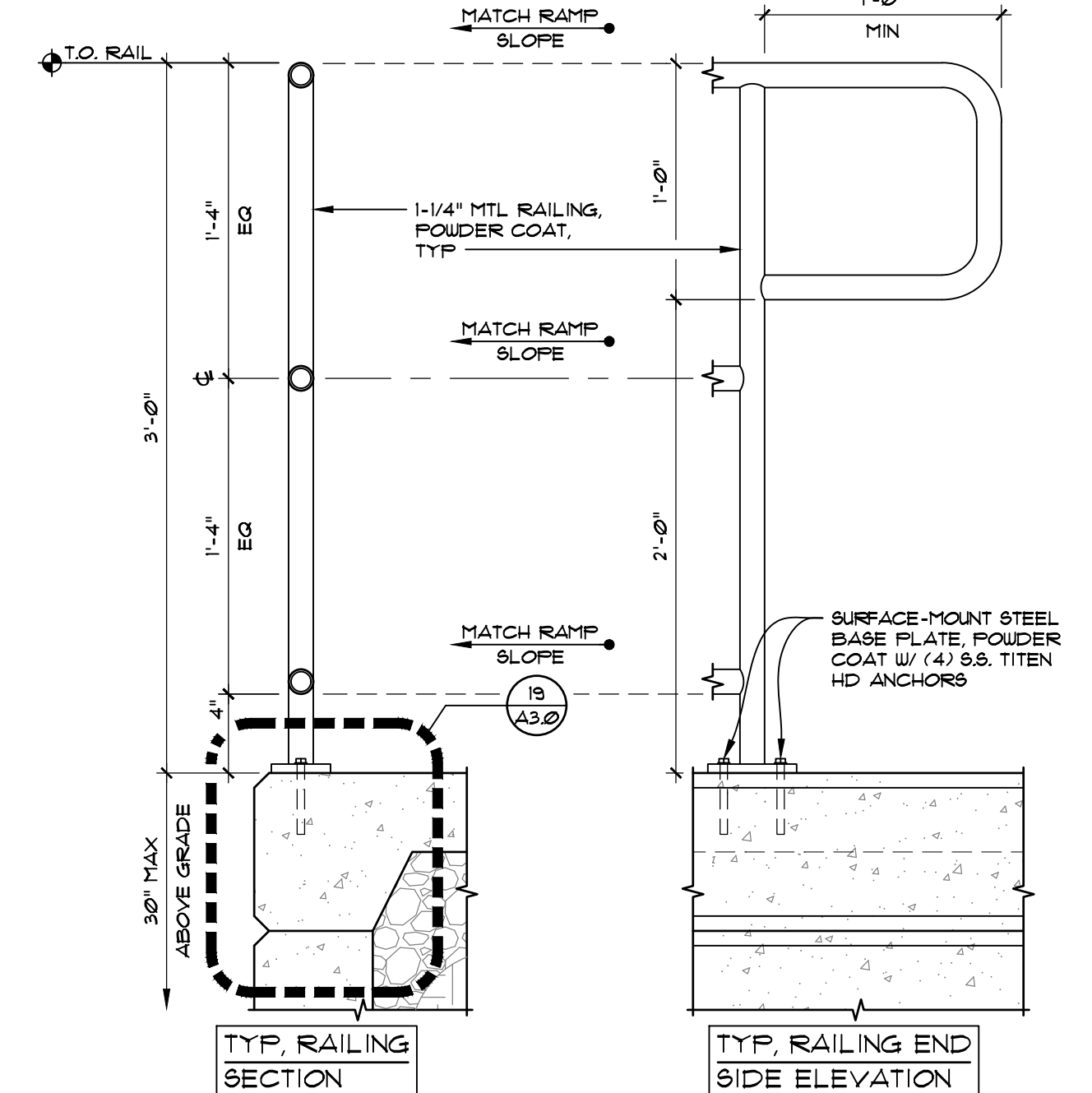
11 TYP. DECK ASSEMBLY
SCALE: 1/2" = 1'-0"



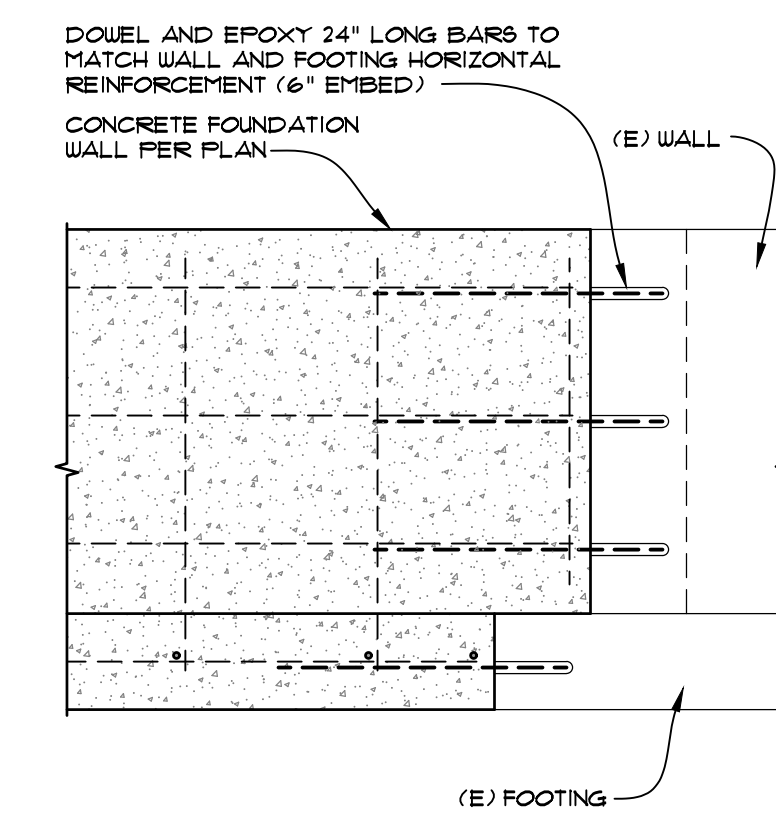
12 TYP. RAMP
SCALE: 1/2" = 1'-0"



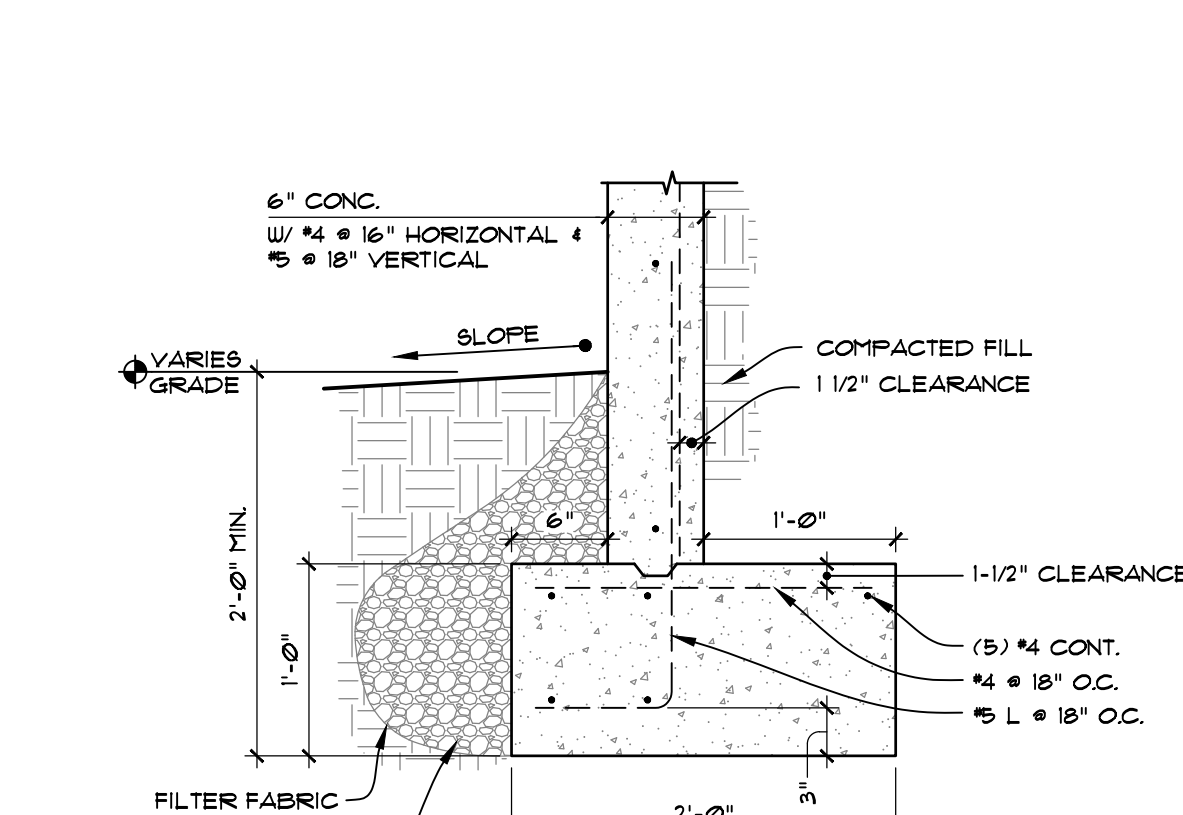
14 RAMP SECTION
SCALE: 1/2" = 1'-0"



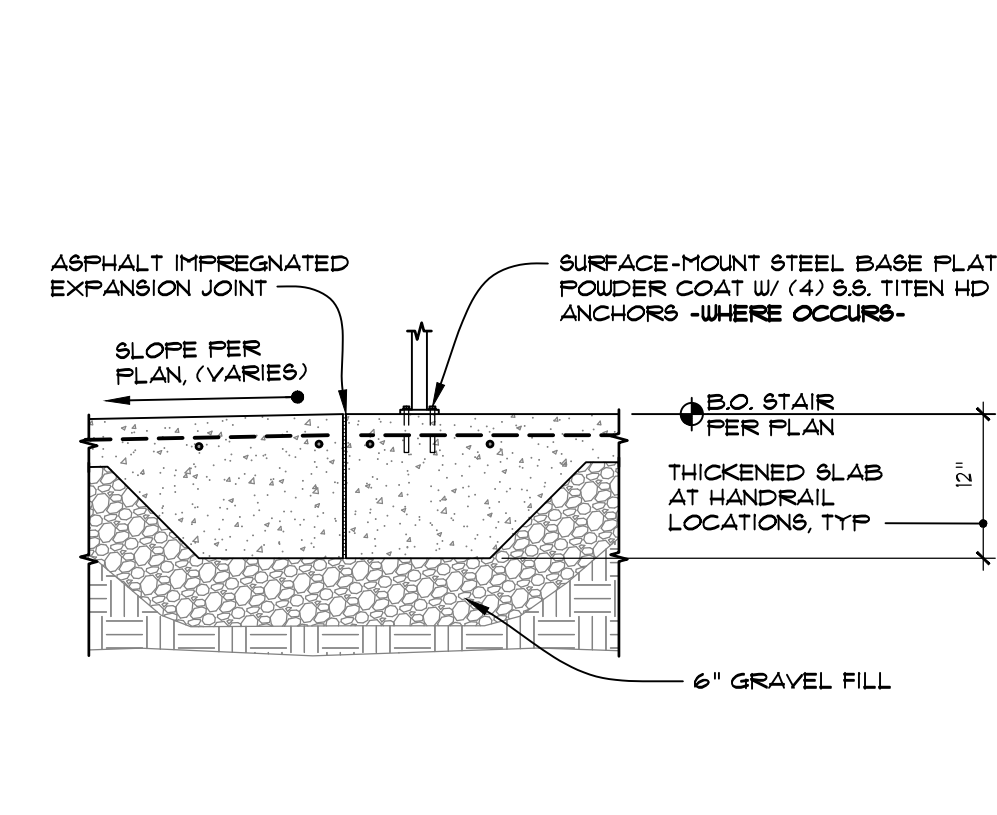
20 TYP. HANDRAIL ASSEMBLY
SCALE: 1-1/2" = 1'-0"



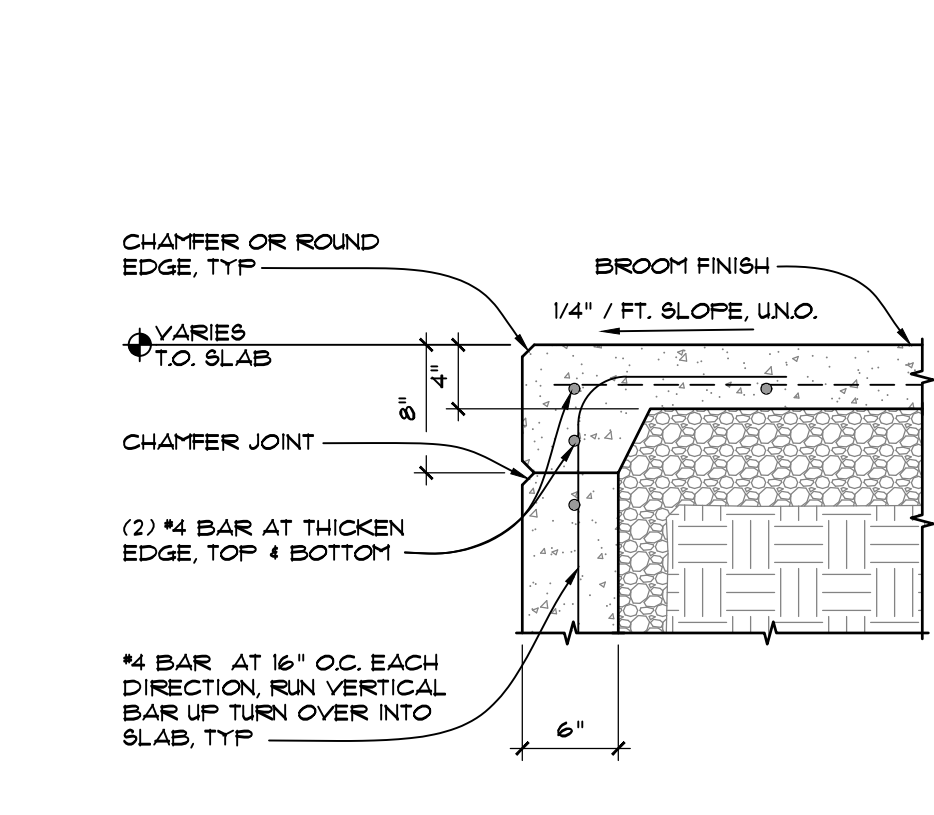
16 TYP. (E) FDN TO (N) FDN
SCALE: NTS



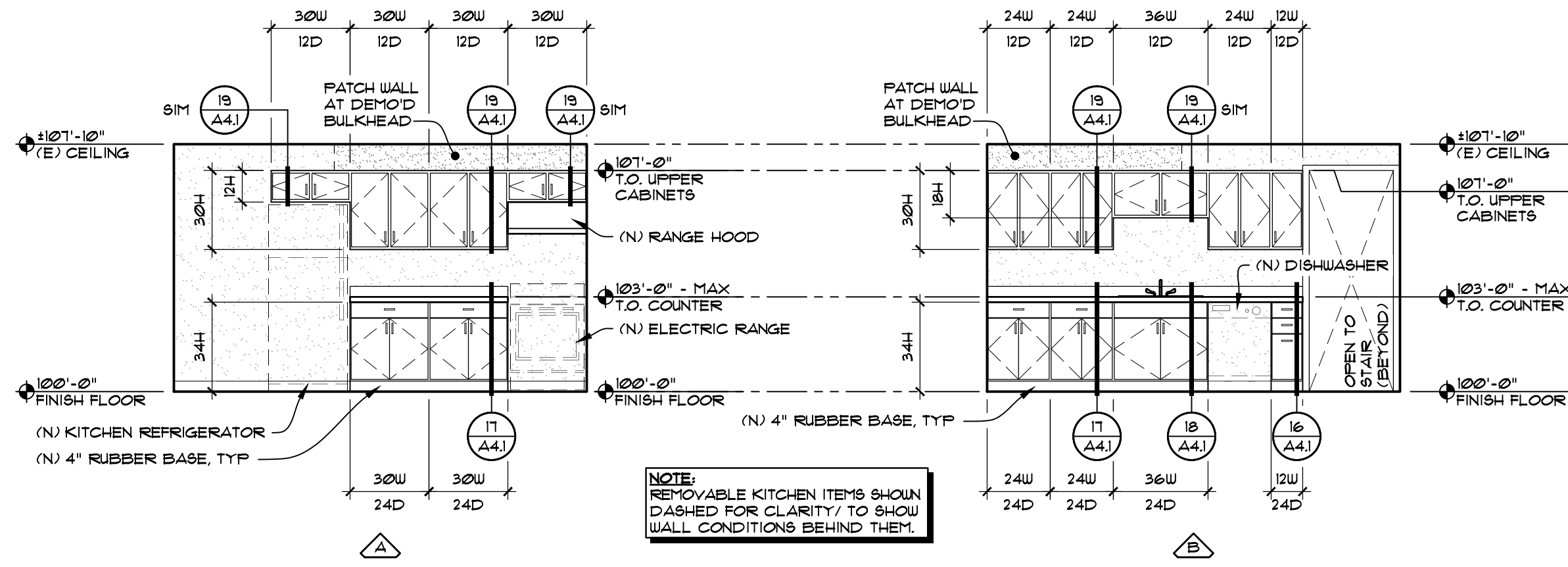
17 TYP. RAMP FOOTING
SCALE: 1" = 1'-0"



18 TYP. RAMP TRANSITION
SCALE: 3/4" = 1'-0"

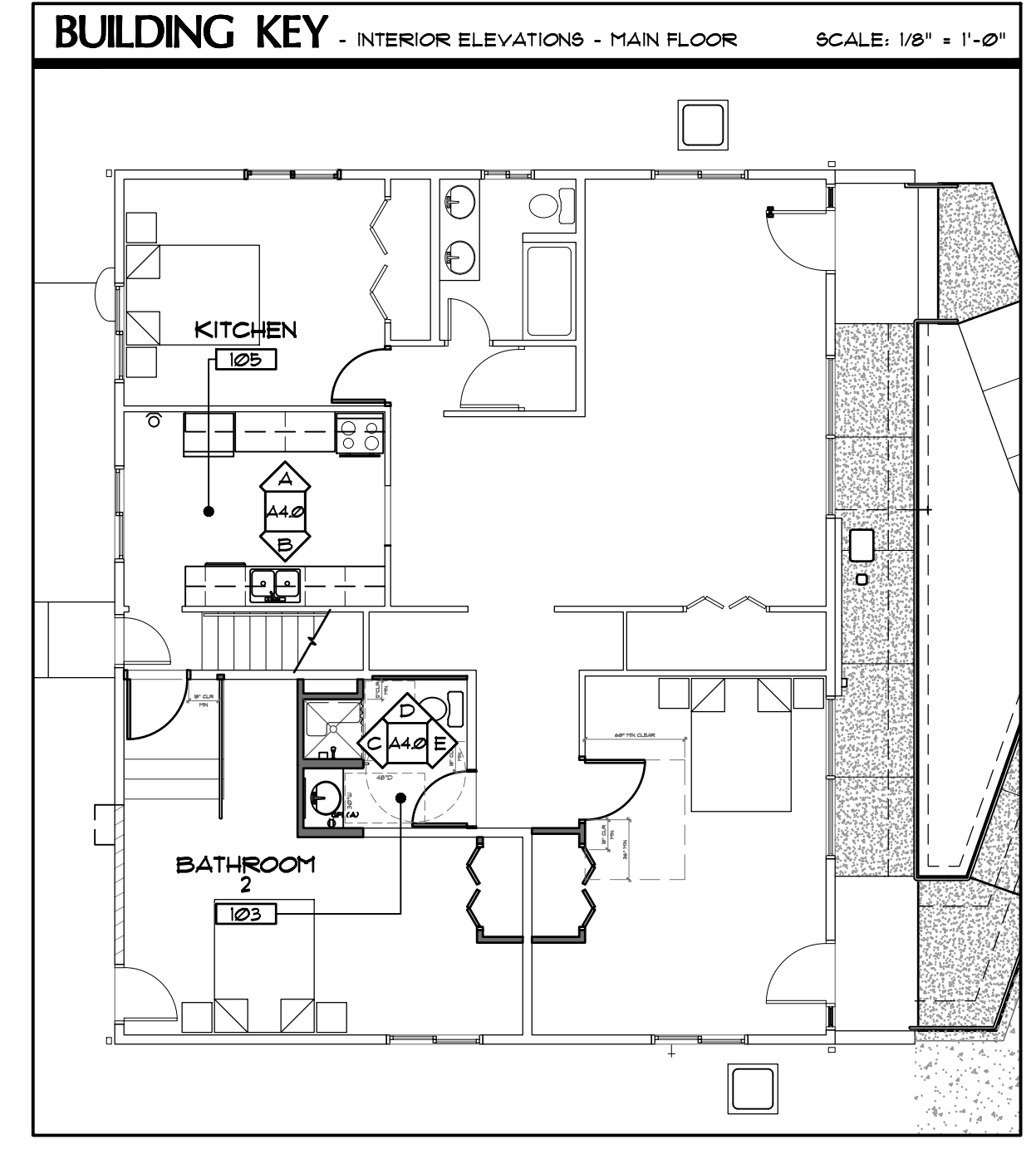


19 TYP. CONCRETE TURNDOWN
SCALE: 1" = 1'-0"



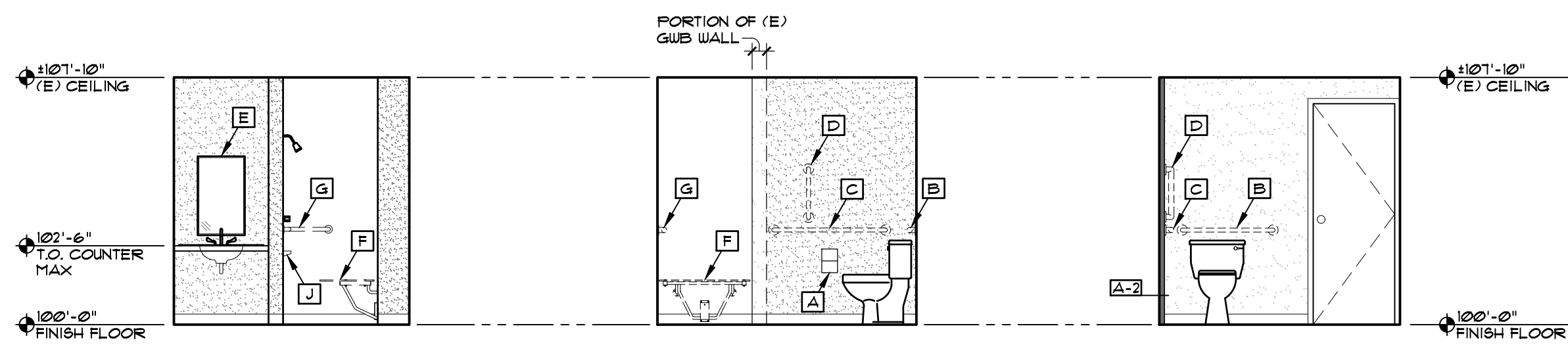
105 MAIN FLOOR - KITCHEN

SCALE: 1/4" = 1'-0"



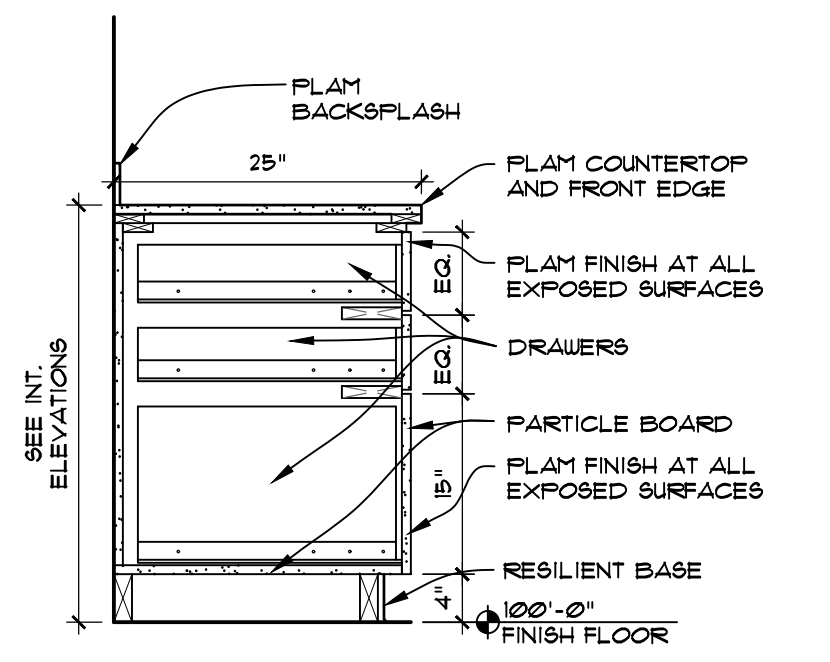
ACCESSORY SCHEDULE

A TOILET PAPER DISPENSER	F ADA FOLDING SHOWER SEAT
B 36" GRAB BAR, PROVIDE SOLID BLOCKING AT WALL	G CORNER SHOWER GRAB BAR
C 42" GRAB BAR, PROVIDE SOLID BLOCKING AT WALL	H SHOWER ROD, CURTAIN AND RINGS
D 18" VERTICAL GRAB BAR, PROVIDE SOLID BLOCKING AT WALL	I SOAP TRAYS
E 24" x 36" MIRROR	J ROBE HOOK MOUNT @ 48" AFF, PROVIDE SOLID BLOCKING @ WALL

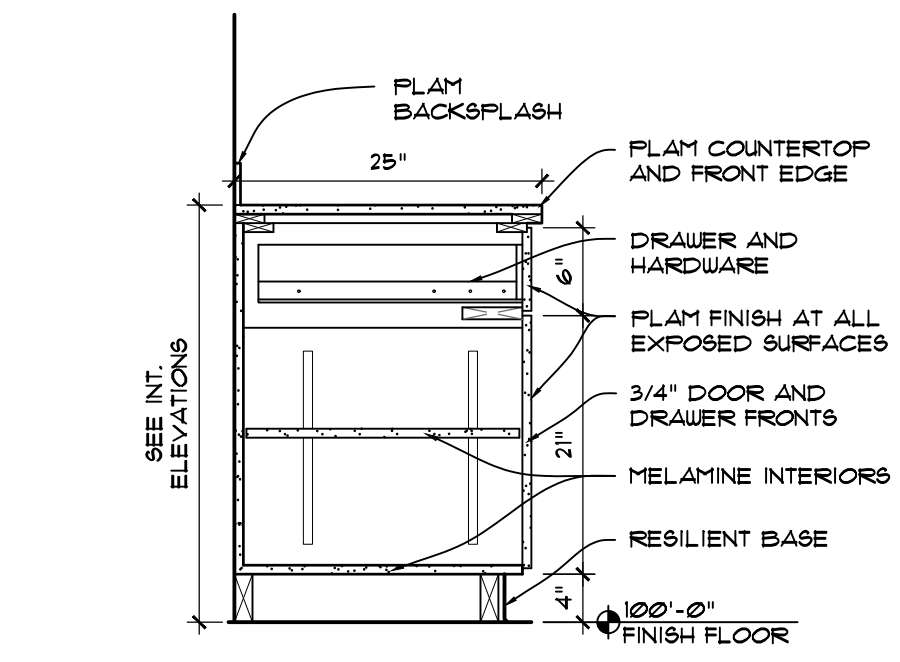


103 MAIN FLOOR - BATHROOM 2

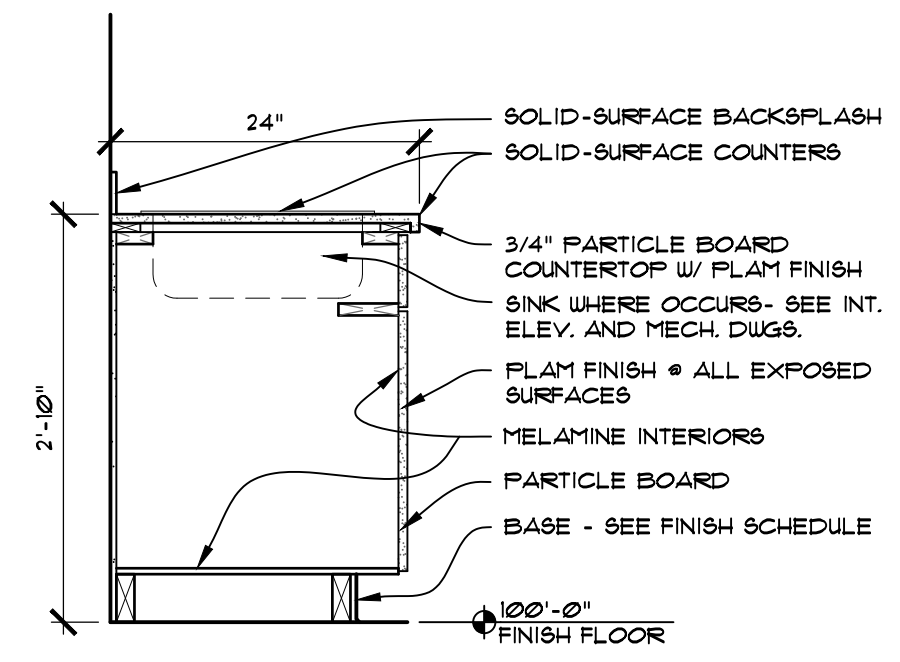
SCALE: 1/4" = 1'-0"



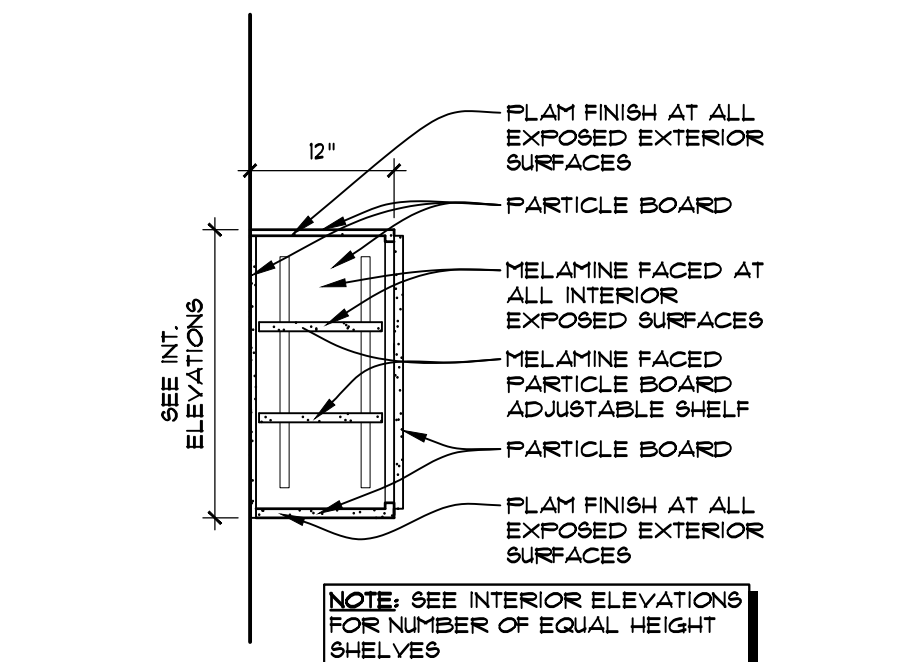
16 TYP, DRAWER CABINET
SCALE: 3/4" = 1'-0"



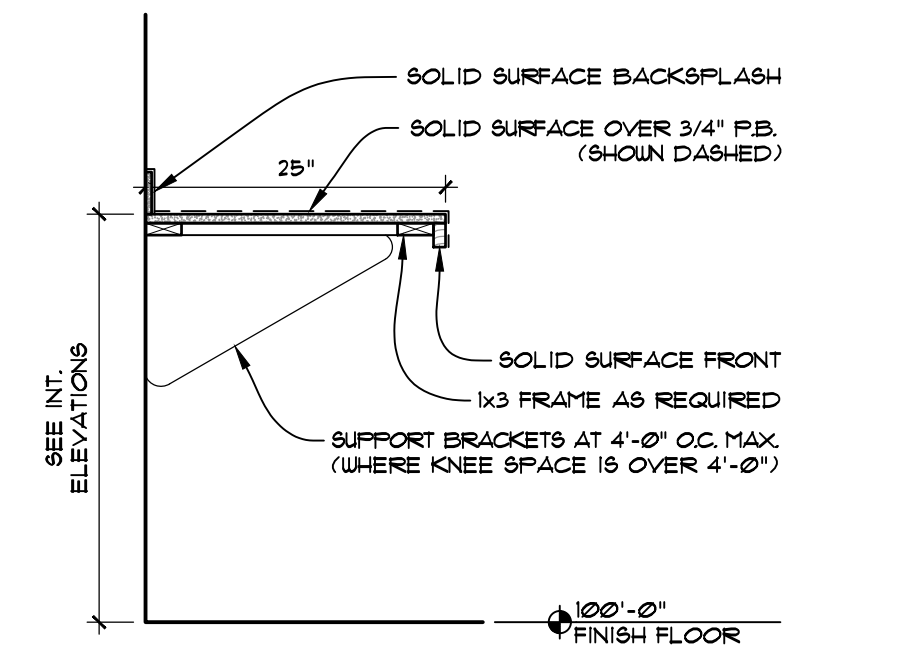
17 TYP, DOOR CABINET
SCALE: 3/4" = 1'-0"



18 TYP, SINK CABINET
SCALE: 3/4" = 1'-0"



19 TYP, UPPER CABINET
SCALE: 3/4" = 1'-0"



20 TYP, COUNTER
SCALE: 3/4" = 1'-0"

CKX

CASTELLAW ♦ KOM ♦ ARCHITECTS
1126 MAIN STREET ♦ LEWISTON, IDAHO
OFFICE (208) 746-0183

PROJECT ♦ LCSC NO. 240005
**LC STATE
PI/AMKINWAAS PHASE 1
RENOVATION**
1112 & 1114 7TH ST. LEWISTON, ID 83501

DRAWING ♦
PHASE 1
INTERIOR ELEVATIONS,
DETAILS
SHEET ♦
A5.0

CONSULTANTS ♦
DATE ♦ 12/06/2024
DRAWN ♦ DJC
CHECKED ♦ BLL
CMA PROJ. NO. ♦ 23043
LCSC PROJ. NO. ♦ 0240005

REVISIONS

CONSTRUCTION DOCUMENTS